



[öko skin]
BY RIEDER



As beautiful as wood, as sustainable as concrete!



Maintenance | Facades clad with Öko Skin slat wall panels require minimum maintenance. Unlike wooden claddings, glassfibre reinforced concrete needs neither be abraded nor painted at regular intervals. Besides that individual elements can be replaced easily.



Easy to install | The slat wall panels have a very convenient size and can be mounted and processed on site - both by professionals and skilled do-it-yourselfers.



Flexible applications | Öko Skin can be used for large-scale facades as well as for small projects such as porches, conservatories, patios, garden sheds, garages, fences and many more.



Fire resistance | Absolute fire resistance thanks to fire protection class A1 (incombustible) - a safe alternative to traditional wood panelling.



Durability | Proven long-term durability for numerous applications as a result of optimum product quality.



Quality and Environmental Standards | ISO 14001 ensures a systematic recording of the environmental impact of the product and its constant minimization. Rieder sets itself high standards in the protection of the environment and uses innovative technologies with ecological responsibility.



Sustainability | The use of high-grade raw materials consisting of mineral substances and glassfibres guarantees optimum product quality. As Öko Skin is based on natural substances the material can be completely recycled. The European Product Declaration EPD provides detailed figures of its eco-balance (according to ISO 14025 and EN 15804).



Energy-conscious | The production of glassfibre reinforced concrete causes 40% less global warming potential than fibre cement or aluminium sheets. Because of its excellent eco-profile, it spends 78% less primary energy than the production of HPL-panels (Ref. IBO Product Test 06/2009).

Product specifications

Material: glassfibre reinforced concrete
 Material class: A1 - incombustible according to DIN 4102
 Dead load: 7.9 resp. 15.6 kg/slat or ca. 29 kg/m²

Please refer to "Öko Skin Characteristics" on www.rieder.cc for more details.

Sizes

1800 x 147 x 13 mm (0.26 m²)

1800 x 302 x 13 mm (0.54 m²)

NEW

The slats can be cut to size and holes can be drilled by the craftsmen directly on site. Edges don't require sealing after cutting the slats.



\ o with two dots

\ öko skin

\ ö is a character used in several Latin alphabets. It consists of the letter o with umlaut. It represents the umlauted form of o, resulting in [œ] or [ø].

\ the pronunciation of ö is like „i“ in „Sir“. ö can be transcribed as „oe“.

\ ö is a typical character of Austria. The ö of Öko Skin stands for Österreich (Austria), ökologisch (ecological) and ökonomisch (economical).

Colours

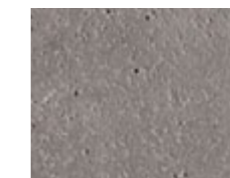
01 | Bianco



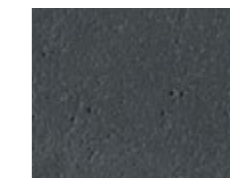
02 | Ivory



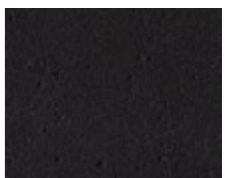
03 | Silvergrey



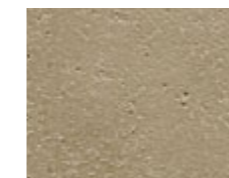
04 | Anthracite



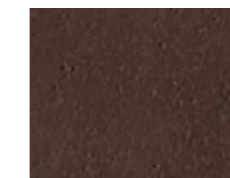
05 | Liquide Black



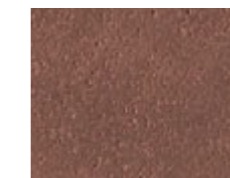
06 | Sandstone



07 | Terra



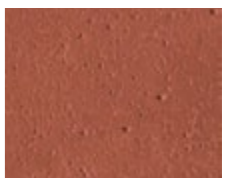
08 | Mocca Brown



09 | Venice Green



10 | Terracotta



Öko Skin is colored throughout with iron oxide and natural supplements. The natural, authentic colours of Öko Skin fit well in landscapes and blend with nature and the environment. The surface of Öko Skin is sandblasted with varied pressure and creates a vivid surface.

Glassfibre reinforced concrete is a natural material. The raw materials used for the production of Öko Skin create a specific surface appearance which is typical for concrete. This play of colours within a certain colour shade is intentional and enhances the vivid character of concrete.

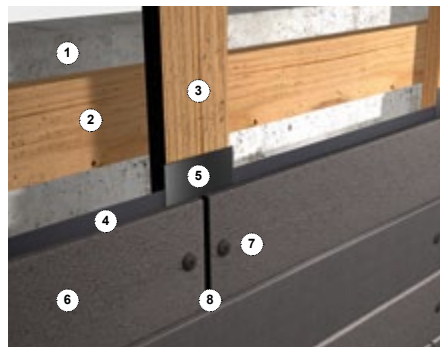
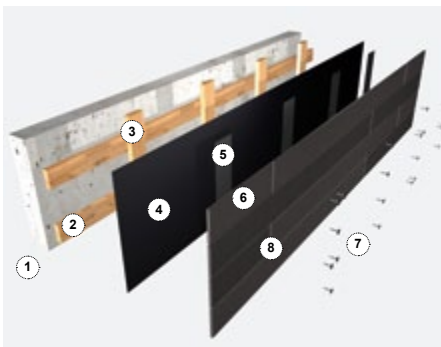
Due to technical reasons printed colours may differ from the original panel shades.

Installation

Öko Skin slat wall panels are used as facade cladding and mounted on a substructure. The type of battening required depends on which laying pattern is chosen for the Öko Skin facade. Öko Skin slat wall panels can be installed both **horizontally** and **vertically**. The type of patterning (e.g. **parallel**, **1/2 shifted** or **1/3 shifted**) influences the complexity of substructure and assembly. Öko Skin slats can be fastened with **screws** to a **wooden** substructure or with **rivets** or **adhesive** to an **aluminium** substructure.

Screws and rivets are available with special colours matching Öko Skin surfaces. Öko Skin slats with 302 mm width can be alternatively installed as lap siding, where the concrete slats are fastened to the battens at an angle to form an overlapping joint.

The different laying patterns and colours offer a wide range of design possibilities. For further details on the processing and mounting of Öko Skin slat wall panels please refer to the "Öko Skin Installation Instructions" on www.rieder.cc.

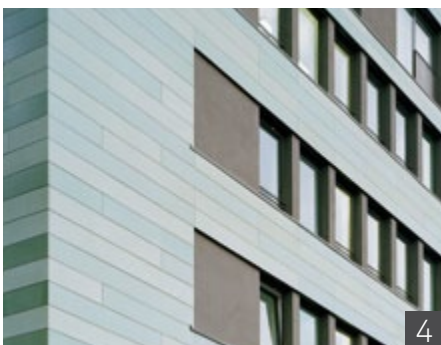
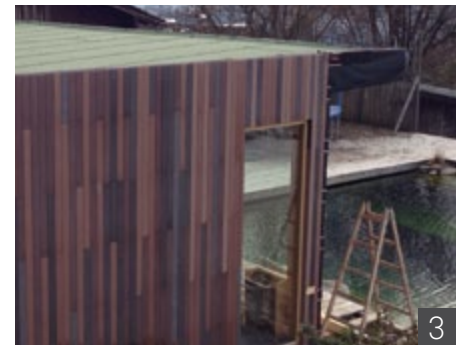


Assembly principle:

Screws on wood-subconstruction

- 1 wall / brickwall
- 2 counter battening, opt. insulation
- 3 main battening
- 4 sheets for waterproofing
- 5 waterstop / joint tape
- 6 Öko Skin slat wall panels
- 7 screw
- 8 open joint 8 mm

Laying examples:



1 Öko Skin 147 mm, Silvergrey, vertical installation (1/3 shifted), screws on wooden substructure 2 Öko Skin 147 mm, Sandstone, interior wall cladding, horizontal installation (1/2 shifted), screws on wooden substructure 3 Öko Skin 147 mm, various colours, vertical installation, screws on wooden substructure 4 Öko Skin 302 mm, Venice Green, horizontal installation, rivets on aluminum substructure 5 Öko Skin 302 mm, Bianco, horizontal installation, lap siding 6 Öko Skin 147 & 302 mm, Silvergrey, horizontal installation (1/3 shifted), rivets on aluminum substructure

Contact



Rieder Smart Elements GmbH

Mühlenweg 22 | 5751 Maishofen | Austria
 Tel. +43 6542 690 844 | Fax. +43 6542 690 855
 E-Mail: oekoskin@rieder.cc | www.rieder.cc